

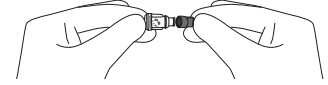
Quick Setup Guide

Before starting therapy, read the Instructions for Use that come with the Passio Pump Drainage System. This guide is to be used only as a supplemental reference.

Preparing for therapy

1. Open the Passio pouch and separate the blue wrapped redressing kit from the drainage bag.
2. Undress your catheter site.
3. Open the redressing kit. Leave all of the contents of the redressing kit on the blue wrap.
4. Put on gloves.
5. Tear open the 3 alcohol pads without removing them from the pouch.
6. Undress your catheter site. Do not pull on the catheter.

7. Remove blue valve cap and throw it away.

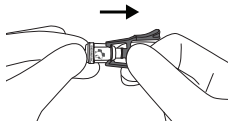


8. Wipe the catheter valve with an alcohol pad.

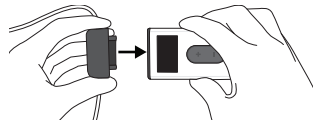



Initiate Drainage

9. Remove the clear sheath from the catheter connector and insert connector into the catheter valve.



10. Attach the pump head to the Passio Handheld Control Unit.



11. Press the Power button . The following screens will appear:



Handheld Instructions

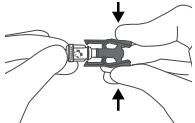
12. Press the "+" button once to start drainage.

13. To increase fluid flow, press the "+" button. To slow fluid flow, press the "-" button.

14. At any time during therapy or to stop drainage, press the pause (II) button.

Completing the drainage therapy and dressing catheter site

15. Disconnect the drainage line from catheter.



16. Wipe the catheter valve with a new alcohol pad and place a new blue valve cap onto the catheter valve.

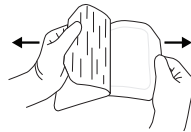
17. Open the skin prep pad and wipe the area where you will place adhesive dressing and allow skin to dry. Place split gauze around catheter up against skin and wind catheter on top of gauze.



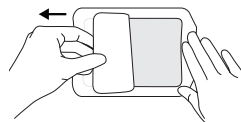
18. Cover catheter with gauze pads.



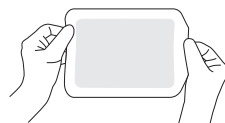
19. Remove the paper backing from the adhesive dressing to expose the sticky side.



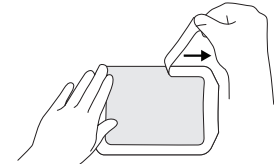
20. Remove the center panel to view the site through the film. Do not remove the outer frame until after the dressing is applied to the site.



21. Place the dressing over the site, and press gently to adhere to skin.



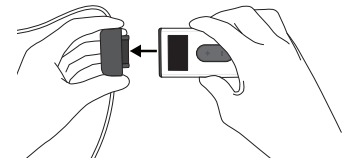
22. Remove the outer frame and press down the edges of the dressing as the frame is being removed to stick firmly to the skin.



23. Record the amount of drainage displayed on the screen.

24. Press and hold the Power button for 2 seconds to turn off the power.

25. Remove pump head from Control Unit.



26. Dispose of collection system.



Scan to view training video

QUESTIONS?

Call 24/7
1-833-BEARPAC
(1-833-232-7722)



BEARPAC
MEDICAL